

The Special Edition

December
2024



From the Director:

The month of December has certainly snuck up on me! It's hard to believe we are now less than three weeks away from winter break. I hope you'll all take this well-deserved time away from the important work of teaching and learning to relax, recharge, and prepare for the new year and second half of the school year ahead.

As the year comes to a close, I find myself reflecting on the goals I set for 2024 and the progress made so far. I am now six months into my role as Director of Special Education, and while the journey has been challenging, it has also been deeply rewarding. One of the highlights has been developing new relationships with some of the best educators and students across our three school districts. Your commitment to supporting students with exceptionalities inspires me every day.

Looking ahead to 2025, I'm excited to set new goals and work together to continue improving outcomes for our students. I encourage each of you to take some time during the break to reflect on your own accomplishments and consider what you hope to achieve, both professionally and personally, in the coming year.

Thank you for all you do to help our students grow and thrive. I look forward to the many ways our students with exceptionalities will continue to excel because of your dedication and care.

Your Partner in Education,

Erica Bammes
Director of Special Education



OFFICE CLOSURES - Due to the Christmas holiday, all buildings/offices will be closed December 23 through January 2, 2025. Enjoy your time with your family and friends and have a very MERRY CHRISTMAS and a HAPPY NEW YEAR!

November Kudos Winner



Congrats to Kim Marquardt!

Nominated by Matthew Olthoff, Transitional Teacher at WMS

Transitional Teacher

KUDOS TO...

CAROLE HAY, School Psychologist -

Carole has worked tirelessly to support students and staff. She supports multiple buildings, but I especially see her hard work in Wamego Middle School where she is mentoring teachers, working with students, and still has time to bring Cheez-its for kids! Carole works every night, every weekend, and has gone above and beyond this year in so much more than her job entails. She has such a big heart and dedication to our district.

Thank you Carole, we couldn't do it without you.

MICHELLE KIRK, Special Education Teacher at Rock Creek Middle School

-Michelle has created a wonderful environment in her classroom for students and staff. Michelle does an excellent job placing staff in areas that they can thrive in. Her experience has allowed her to understand the difficulties that paras face every day and she is amazing at giving breaks and empathizing with staff when they are struggling.



Krystal Nelson, COTA at USD 323 & USD 329

- I want to give a big shoutout to Krystal, our incredible COTA! Krystal consistently goes above and beyond in her role, advocating for our students with passion and creativity. She dedicates time to researching out-of-the-box sensory interventions, reflex-integration, and innovative handwriting activities that truly make a difference. Her positivity, dedication, and hard work are inspiring, and she is an essential part of our team. Thank you, Krystal, for everything you do to help our students thrive!

Kathleen Sherer, ESL Para at Central Elementary School - Mrs.

Shreer goes above and beyond when helping students in Mrs. Ayres room. She is patient, kind and always willing to help any student or Mrs. Ayres out. She is an amazing para to Santos and it is clear how much she cares about him. She spends time working on tricky words with him and is always quick to provide him with help. She won't move on from a lesson until he understands it. She's amazing!

SPED Staff at St. George Elementary -

This past month, I have seen the SGES SpEd team - teachers, paras, support personnel - work very well together in times of significant support needed for our students, or students in crisis.

The amount of teamwork, communication, coordination, and decision-making in times of stress has not gone unnoticed and has made a huge difference in how we respond to our students needs.



Kim Marquardt and Jodi Hecht, SPED Teachers at

Wamego Middle School - They both are awesome SPED role models. As a brand new teacher to the SPED world, I could not have asked for better examples.

Stephanie Downs, Para at St. George Elementary School-Stephanie is willing to help any student in the classroom, whether they are identified or not. She is willing to jump in to help without being asked. She does not mind doing extra work to help any kiddo. She is excellent at small group instruction. When given materials to teach, she takes it and runs with it. I had a student who starting crying in the middle of a math lesson.

Stephanie had a small group of 4 students in the resource room. She stopped the lesson and was very empathic and caring for this student. She reassured the student that it's ok that this lesson is hard. It's a new concept and going to be hard for everyone. Stephanie is VERY patient with my students and is able to meet most of their needs, even though they have differentiated needs.

Upcoming Events

NCI Training Dates

- Friday, January 3 ~ Initial, 8:00am-3:00pm ~ Rock Creek (1 hr. lunch break on your own)
- Friday, January 17 ~ Initial, 8:00am-3:00pm ~ Wabaunsee (1 hr. lunch break on your own)
- Friday, March 28 ~ Initial or Refresher as needed ~ Wamego PLC Bldg

Call Robin at the Coop, 785-456-9195, to sign up for a session.

Child Find Screenings

January 24 - St. George
March 28 - Wamego

SPIRITABILITIES 2024-2025

PERFORMANCE SCHEDULE:

- Friday, January 17 - Clinic
Performance at Varsity Bball Halftime



Para In-service

Monday, February 17

8:30-11:30 am @ SGES
Cafeteria (morning session)
12:30-3:30 pm @ WHS
(afternoon session)

More information will be sent soon about registering for which session you plan to attend.

From Human Resources:

REMINDER...if you have not submitted your TB Tests and Certificate of Health, please do so as we will be going through that after Thanksgiving break.

Related Service Providers:

Your November and December Daily Logs are due by January 3rd. Please submit these to Diane Miles.



National Ugly Christmas
Sweater Day, December 20

Progress Reports:

Reminder...progress reports for the second quarter grading period are due to be completed before winter break. It is important for families to receive accurate progress updates regarding their child with exceptionalities.

IMPORTANT INFORMATION

New Training Series Available on Infnittec

"Social-Pragmatic Communication Deficits" series: This training teaches participants how to reframe their thinking in addressing adolescent students with ASD beyond the concept of "social skills." In part 1, the assessment process is discussed with reference to why standardized tools fail to reveal social-pragmatic deficits and how to avoid issues with litigation. Assessment techniques are provided that target the underlying causal factors thereby allowing for greater accuracy in goal development. Suggestions on how to write pragmatic goals that stand up in court are also provided. Part 2 stresses the importance of targeting four foundational pillars of social-pragmatic communication effectiveness: Theory of Mind, Central Coherence, Executive Function, and Emotional Intelligence. It provides evidence-based strategies designed to target these areas and demonstrates how to generalize for future use in understanding why many social issues are rooted in a breakdown in recognizing the "Same-but-Different" concept.

For Students on a BIP

"The IEP should contain at least one goal to address and monitor student behavior and the effectiveness of the positive behavior intervention plan."

This statement is listed on the BIP, but after reviewing the challenging duty forms I don't think most people realize this is a requirement.

DLM Testing

- DLM testing must take place in both fall and spring.
- DLM blueprint requirements must be met during the fall testing window.
- **The fall DLM testing window is September 9 through December 20, 2024.**
- Spring window is February 3 through April 25, 2025.

Medicaid Logs

Quarterly due dates for 2024/25
Reminder of the School year are as follows:

January 8 (November & December)
March 18 (January, February, March 8)
May 24 (March 18-May 21)

IEPs Due Before Break

Please remember to send completed IEP paperwork for all students to the cooperative as quickly as possible but no later than 10 days from the IEP meeting date. **All first semester paperwork and progress reports should be finalized by winter break. Please do not wait until after winter break to send paperwork for IEP's held prior to winter break.**

IMPORTANT INFORMATION

The following are common errors found on IEP paperwork. Please reach out to the Coop team if you have any questions.

WebKIDSS: remember to always include both parents on the demographics page. We are legally required to invite and document that invitation to both parents for all meetings, regardless of marital status. The only time a parent is not invited to a meeting is if the parental rights have been severed, which must be documented by legal paperwork.

Notice of Meeting: remember to invite and list on the NOM the school psychologist if you are holding a re-evaluation meeting and related service providers if the student receives any related services.

Prior Written Notice: because all of these actions require parent consent, they need to be included under #2 Explanation of why the action is proposed or refused on the PWN - ESY, all changes to services, adding or making changes to accommodations/modifications/assistive technology, and adding or making changes to behavior intervention plan.

IEP

- Other Health Impairment (OH): when a student has a primary or secondary exceptionality of OH, the Health section must be marked as an area of need. Please be specific about the health condition and the student's strengths, needs and current performance as they relate to the health condition. (The health page format has changed from the previous format so some of the information that was entered previously is not coming forward when a new IEP record is created.)
- Accommodations - when including "Read aloud by computer" accommodation on an IEP, please include "For state assessments, only when approved by KSDE" in the Frequency section.
- Behavior Intervention Plan - when a student has a BIP, there must be at least one goal to address and monitor student behavior and the effectiveness of the plan.
- Goals - remember to enter goals in the PLAAFP section(s) and they will then automatically load to the goals section. Check that the need will be met by a goal and then click the green NEW button to enter the goal information.
- Goals - the baseline needs to include the current data of the skill(s) measured in the goal. The easiest way to do this is to copy and paste the goal into the baseline with the current data. For example - Goal: "By the next annual IEP, when given an unfamiliar grade level passage with multisyllabic words, student will read 155 words correctly per minute with 90% accuracy on 4 out of 5 trials." Baseline: "Student can currently read 100 words correctly per minute with 65% accuracy on 4 out of 5 trials." Oftentimes data is included for a prerequisite skill, but not the actual skill being measured.

Important Information

News about Staffing Summaries

Maintaining IEP meeting notes in the form of a "Staffing Summary" within WebKIDSS is good practice. However, it is recognized that not all IEP meetings will require a staffing summary. Therefore, beginning the second semester, staffing summaries will be optional in our cooperative. They should continue to be documented when meetings involve contentious issues, challenging dynamics, or when the family structure is not intact.

Staffing summaries must be recorded in real-time during the meeting, rather than afterward. The case manager should designate someone to take these notes during the meeting. It is recommended that this individual not be the case manager or school psychologist, as their roles involve facilitating the meeting and presenting evaluation results, making it difficult to also take notes.

Questions? Contact the Coop.

December Fun Facts

- The word "Decem" is Latin for "tenth". December was originally the 10th month in the Roman calendar, but January and February were later added.
- The birthstones for December are turquoise, zircon, or tanzanite.
- The birth flower for December are holly and narcissus. Holly is symbolic of Christmas because of its dark green leaves and red berries.
- The winter solstice marks the first day of winter in the astronomical calendar and the shortest day of the year.
- On December 16, 1965, NASA astronauts Thomas Stafford and Wally Schirra played "Jingle Bells" while orbiting Earth. This was the first song ever performed in space.
- Three billion Christmas cards are sent in the U.S. each year.
- It takes about 15 years to grow the average Christmas tree.

Look
on the
bright
side

DAY



December 21



Memorandum for Extended School Year Services for Special Education

To: Special Education Staff

From: Erica Bammes

Re: Special Services Extended School Year 2024-2025

We are beginning to make plans for extended school year (ESY) services for this upcoming summer and are changing some of the forms to reduce the amount of paperwork. Specific details (including dates/times/locations) will be shared about ESY at a later date.

Please remember that ESY eligibility must be determined annually. While students may qualify for ESY one year, they may not qualify for ESY the next year. This eligibility determination should be discussed with families on an annual basis. ESY is not for students who are gifted, nor is it designed to help students with disabilities advance in relation to their peers, or recover credits in their secondary programs. It is not designed for students who regress solely due to transitional life situations, inconsistent school attendance, or medical issues resulting in degeneration of skills.

ESY is determined as a necessary service to eligible students, who without such service would not be able to recoup specific IEP skills following a break in service. See the attached page for qualification information. The IEP team must determine if the regression, experienced by the student following a break in service, is so substantial that the skills cannot be recovered in a comparable amount of time to the length of the break. Some degree of loss in skills typically occurs with all students during normal school breaks, and would not be considered substantial.

Before leaving for winter break, by December 20, please complete the form at this [link](#) to let us know of any students that you are considering for ESY services. ALL staff must fill out the form regardless of whether or not you have anyone attending. At this time, you do NOT need to determine that the student qualifies for ESY, amend or make any changes to the IEP, and/or notify families. These steps will be later in the process. Please select the word "NONE" on the form and return it if you do not anticipate any students qualifying for ESY. This form will also collect names of staff interested in working ESY.

Thank you for submitting your list of names. We will be in touch after break. Thank you for ensuring your students in need receive this necessary support this summer.

Erica Bammes

Director of Special Education

ESY QUALIFICATION INFORMATION

A student must meet either the significant regression criteria and/or the nature and severity of the disability criteria in order to demonstrate a need for special education ESY services. Below is the guidance for both areas.

1. Significant Regression Qualifications -

a. **Significant regression means loss of skills requiring 40 school days or more (9 weeks) to recoup.**

b. Measuring Regression:

i. **Summer Break: Collect data in May on specific skill(s). Collect the same data in August when the student returns. Collect the same data at the end of the first quarter. Did the student recoup the skill(s) they had prior to summer break?**

ii. **Winter Break: Collect data in December prior to winter break on specific skill(s). Collect the same data when the student returns in January. Collect the same data at the end of the third quarter. Did the student recoup the skill(s) they had prior to winter break?**

2. Nature & Severity of the Disability

a. **This justification applies to students who would be eligible for the Kansas Alternate Assessment (DLM model). These students require our most intensive services. *These students should have the 'Rubric for Determining Student Eligibility for KS Alternate Assessment (DLM) for Students with the Most Significant Disabilities' completed within Webkidss.**

b. To be eligible, students must demonstrate:

i. **Significant cognitive disability that significantly impacts intellectual functioning and adaptive behavior;**

ii. **Learning content standards linked to the Essential Elements;**

iii. **Requiring extensive direct instruction and substantial modifications and supports to achieve measurable gains in the grade- and age-appropriate curriculum.**

Trainings Available

SPECIALLY DESIGNED INSTRUCTION (SDI) FOUNDATIONS

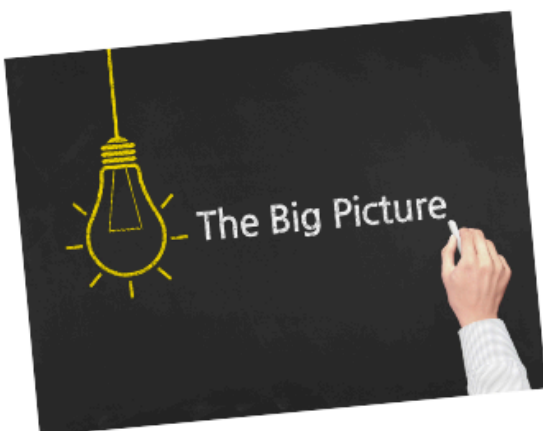


GREENBUSH

Workshop Series

An engaging professional development opportunity that aims to provide participants with a comprehensive understanding of Specially Designed Instruction (SDI) in educational settings. SDI plays a crucial role in ensuring that students with diverse learning needs receive appropriate and effective instruction to support their academic and developmental growth. Participants will delve into the fundamental concepts of SDI, explore its unique components, and discuss best practices for its implementation.

This 3-part series is being offered in a new location!



Dates:

- Day 1, 1/14/2025
- Day 2, 3/11/2025
- Day 3, 4/22/2025

*Click Dates
Below
TO REGISTER*

Time:

8:30am to 3:30pm

Location:

Maize Educational Support Center
905 W Academy Ave
Maize, KS 67101

Questions? Contact the Trainer...

Trisha Moritz
• trisha.moritz@greenbush.org

Who should attend?

- Special Education Teachers
- SPED Directors/Asst Directors
- New School Psychologists

If interested in attending, contact the Coop.

Trainings Available



GREENBUSH
THE EDUCATION SERVICE CENTER



INTRODUCTION TO **COLLABORATIVE PROBLEM SOLVING**

As an educator, you already know how to differentiate your instruction to help kids with learning differences. You've been trained in trauma-informed principles. But what you may need are new strategies for handling challenging behavior that disrupts the learning environment for all. Our evidence-based approach, Collaborative Problem Solving® (CPS), provides a proven roadmap for differentiating your discipline with your most challenging students.

**CHOOSE
YOUR
DATE**

& Register Today



February 4, 2025 | 9:00am-3:00pm

Greenbush, 1104 E 1000 Rd, Lawrence



February 6, 2025 | 9:00am-3:00pm

Greenbush, 947 W. 47 Hwy, Girard

QUESTIONS?

Contact Jennifer Taylor, jennifer.taylor@greenbush.org

If interested in attending, contact the Coop.

CELEBRATIONS



December Birthdays

Lacey Schreck - 4

Sabine Ginavan - 7

Connor Barvais - 10

Tori Sieben - 11

Kim Marquardt - 12

Caitline' Christenson - 14

Tara Roberts - 14

Mary Poe - 15



Sheila Burns - 16

Robin Laughlin - 23

Barb Tebbutt - 24

Kim Cutting - 29

Christine Roberts - 29

Rebecca Underwood - 29

Kennady Bustamante - 30

Shelli Panzer - 30

NATIONAL SPECIAL EDUCATION DAY

MONDAY
DECEMBER 2
2024

This day is observed annually and commemorates the anniversary of the Individuals with Disabilities Education Act that was signed into law by U.S. President Ford on December 2, 1975. This act made public education available to all eligible children all over the U.S. and made sure that special education was made available to the children that needed it.



INTERNATIONAL DAY OF PEOPLE WITH DISABILITIES

December 3, 2024




INSPIRATION

Let the Spirit of December
Ignite Your Heart, Warm Your
Soul, & Fill Your Life with Joy
& Laughter.



★
when
you
CHOOSE
joy

You feel good
& when you feel
good, YOU do good
& when YOU do good
it Reminds others
of what joy feels like
& it just  might inspire
them to do
the same.

"THE HOLIDAY SEASON
IS A PERFECT TIME
TO REFLECT ON OUR BLESSINGS
AND SEEK OUT WAYS TO
MAKE LIFE BETTER
FOR THOSE AROUND US."



"Maybe Christmas doesn't
come from a store, maybe
Christmas perhaps means a
little bit more."
Dr. Seuss



**On this holiday,
there will be blessings
all around.
Just keep the door of your
heart open
so they can fill it up with
peace, positivity,
and love!**

Happy Holiday!